

TSM810C *8" Vessel Monitoring and Control Touchscreen*

The TSM810C is an 8" dedicated touchscreen that includes Maretron's N2KView® vessel monitoring and control software. The N2KView® software allows you to configure as many favorite screens as you want with exactly the information you want to see. The TSM810C provides an extremely simple touch interface for monitoring and controlling critical systems from anywhere on the vessel.

The TSM810C is ruggedized for marine use and includes a solid state disk drive to withstand the pounding associated with waves. And since the TSM810C only dissipates 10 watts, there is no need for internal cooling fans that are noisy and wear out causing electronics to overheat and fail. The TSM810C can be mounted outside given the high bright screen and waterproof front.

As an alternative to controlling the TSM810C through the touch screen, the TSM810C includes two USB ports for connecting keyboards, mice, or trackballs. The TSM810C also has an Ethernet port for connecting Internet Protocol (IP) cameras for viewing within the N2KView® software. Lastly, the TSM810C contains two completely isolated CAN bus connectors (M12) for easy connection to single or redundant NMEA 2000® networks.



TSM800C features:

- 8" TFT LCD Panel, LED Backlit
- Widescreen Aspect Ratio 5:3
- 800 x 480 Pixels
- 1350 nits Brightness (Optically Bonded)
- Solid State Disk Drive
- Fanless Cooling System
- Flush or VESA Mounting
- Dual CAN Bus for Single or Redundant NMEA 2000® Network Connections

Products

PART NUMBER	DESCRIPTION
TSM810C-01	8" Vessel Monitoring and Control Touchscreen (Direct NMEA 2000 Connection)

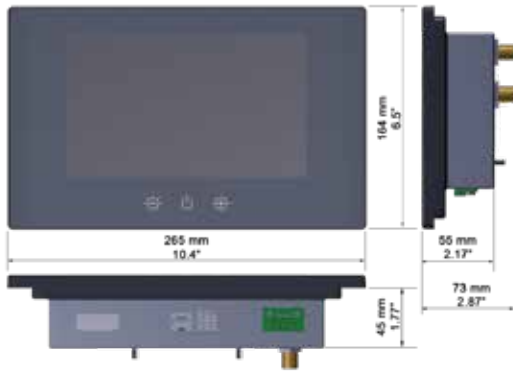


Le spécialiste des équipements électroniques

Zac de la plaine - 1, rue Brindejont des Moulinais
31500 TOULOUSE

Tél : +33 (0)5 67 77 94 44 - Fax : +33 (0)5 67 77 94 49

info@pst-france.fr - www.pst-france.fr



Specifications

Parameter	Value	Comment
Display Size	8"	LED Backlit LCD with Projected Capacitive Touch Screen
Display Resolution	800x480	WVGA
Display Brightness	1350cd/m2	Optically Bonded
Contrast Ratio	600:1	
LCD Color	262K	
Viewing Angle	80° H, 80° V	
USB Ports	1x USB 2.0, 1x USB 3.0	
Ethernet Ports	One RJ-45 GbE	For connection to router
Controller Area Network (CAN) Ports	Two Waterproof (M12)	Dual NMEA 2000® Connection

Approvals

Parameter	Comment
IEC 60945	
NMEA 2000®	

Electrical

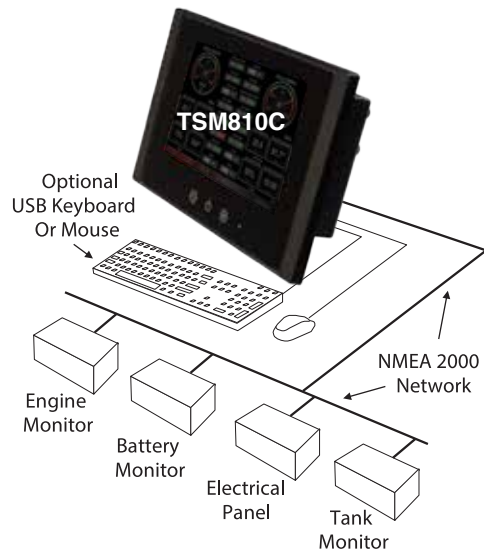
Parameter	Value	Comment
Operating Voltage (Dedicated Supply Connection)	10-32 Volts	DC Voltage
Power Consumption (Dedicated Supply Connection)	10 Watts	Typical
	15 Watts	Maximum
Operating Voltage (NMEA 2000® Connection)	8 – 32 Volts	DC Voltage
Power Consumption (NMEA 2000® Connection)	50mA	
Load Equivalence Number (LEN)	1	NMEA 2000® Spec. (1 LEN = 50 mA)
Reverse Battery Protection (NMEA 2000® Connection)	Yes	Indefinitely
Load Dump Protection (NMEA 2000® Connection)	Yes	Energy Rated per SAE J1113

Mechanical

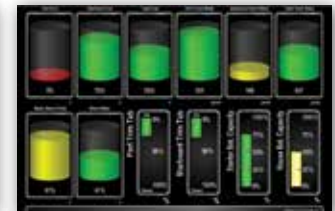
Parameter	Value	Comment
Overall Dimensions (DxWxH)	2.87" x 10.4" x 6.5" (73mm x 265mm x 164mm)	Depth includes NMEA 2000 Connectors
Weight	4.2 lbs (1.9kg)	
Front Panel Material	Glass	
Front Panel Controls	Power, Brightness +/-	
Mounting	4 x M4 VESA Mounting 75mm x 75mm	Screws protrude from back
	Front Mount flush into console with 6 screws	6 x M5 x 15mm screws

Environmental

Parameter	Value
Operating Temperature	-20°C to 55°C (Humidity up to 95%)
Storage Temperature	-30°C to 60°C (Humidity up to 95%)
IP Rating	IP66 Front, IP22 Rear (EN60529)



TSM810C Screen Shots



Le spécialiste des équipements électroniques

Zac de la plaine - 1, rue Brindejonc des Moulinais
31500 TOULOUSE

Tél : +33 (0)5 67 77 94 44 - Fax : +33 (0)5 67 77 94 49

info@pst-france.fr - www.pst-france.fr